

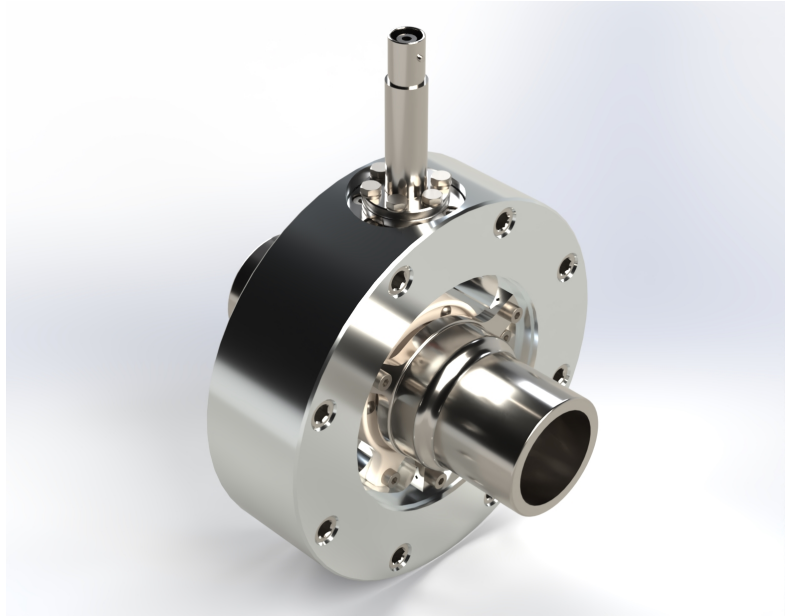
Einzel Lens ISO-F100, central mount, aluminum

921-S7-09-00002-C-01

Electrostatic lenses are ion-optical elements used to guide and focus charged particle beams.

One of the most prominent representative is an Einzel lens which consists of three cylindrical electrodes. Focusing of the beam is achieved by applying a high voltage to the central electrode. Passing an Einzel lens does not change the energy of the charged particles.

Electrostatic lenses can be used in broad pressure ranges, down to ultra-high vacuum conditions.



Einzel lens ISO-F100, central mount, aluminum.

further reading:

- <https://dis-germany.com/product-categories/charged-particle-beam-optics/>

Special Features:

- symmetrical design of electrode assembly based on intermediate flange solution
- aluminum housing with stainless steel adapter flanges
- DN100 ISO-F beamline interface flanges
- 1st and 3rd electrode grounded
- DN16 CF 20 kV SHV feedthrough connected to electrode
- 40 mm electrode inner diameter
- length 158 mm

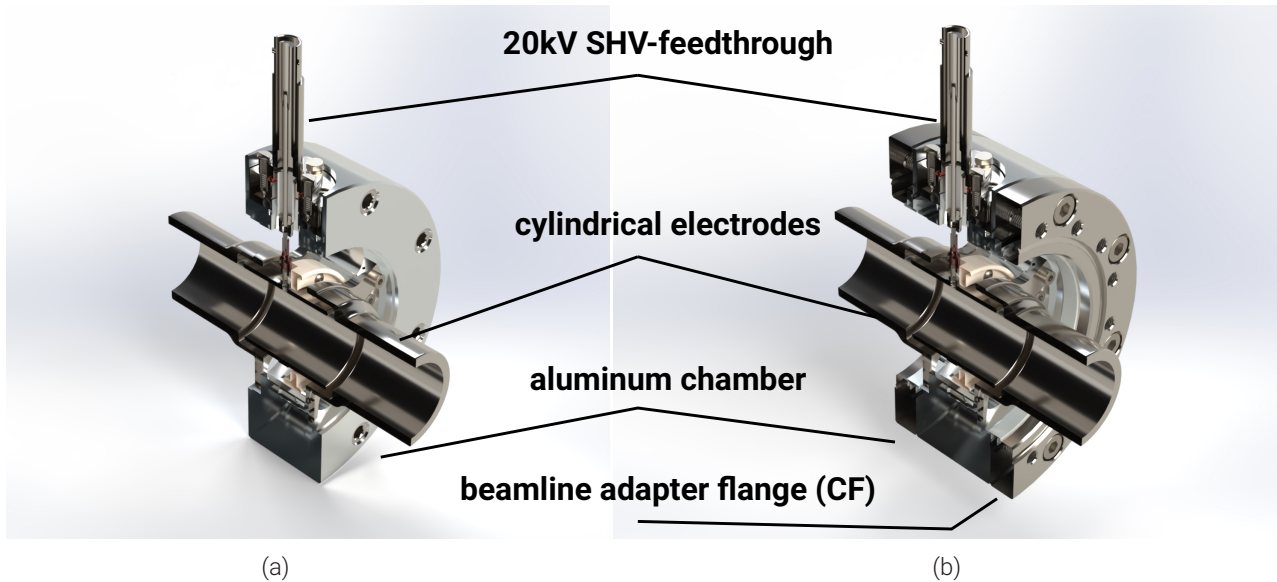
Optional Supplementing Devices:

- power supply for the lens voltage
- high voltage cable with 20kV SHV connector
- DN100 CF / DN100 ISO-F adapter flanges

Please do not hesitate to contact us for additional support.

Einzel Lens ISO-F100, central mount, aluminum

921-S7-09-00002-C-01



Cross section of the Einzel lens ISO-F 100, central mounted, aluminum (a) standard DN100 ISO-F flanges, (b) with DN100 CF adapter flanges

TECHNICAL DATA

maximum applicable lens voltage	±20 kV
pressure operating range	down to 1×10^{-7} mbar
beamline interface flange	2 x DN100 ISO-F (optionally: DN100 CF adapter flanges)
high voltage feedthrough	DN16 CF
connectors	20 kV SHV connector
maximum beam width	40 mm
maximum bakeout temperature	120 °C
flange to flange distance	50 mm (optionally: 80 mm with adapter flanges)
length of lens system	158 mm
approx. box size (length x width x height)	158 mm x 165 mm x 221 mm